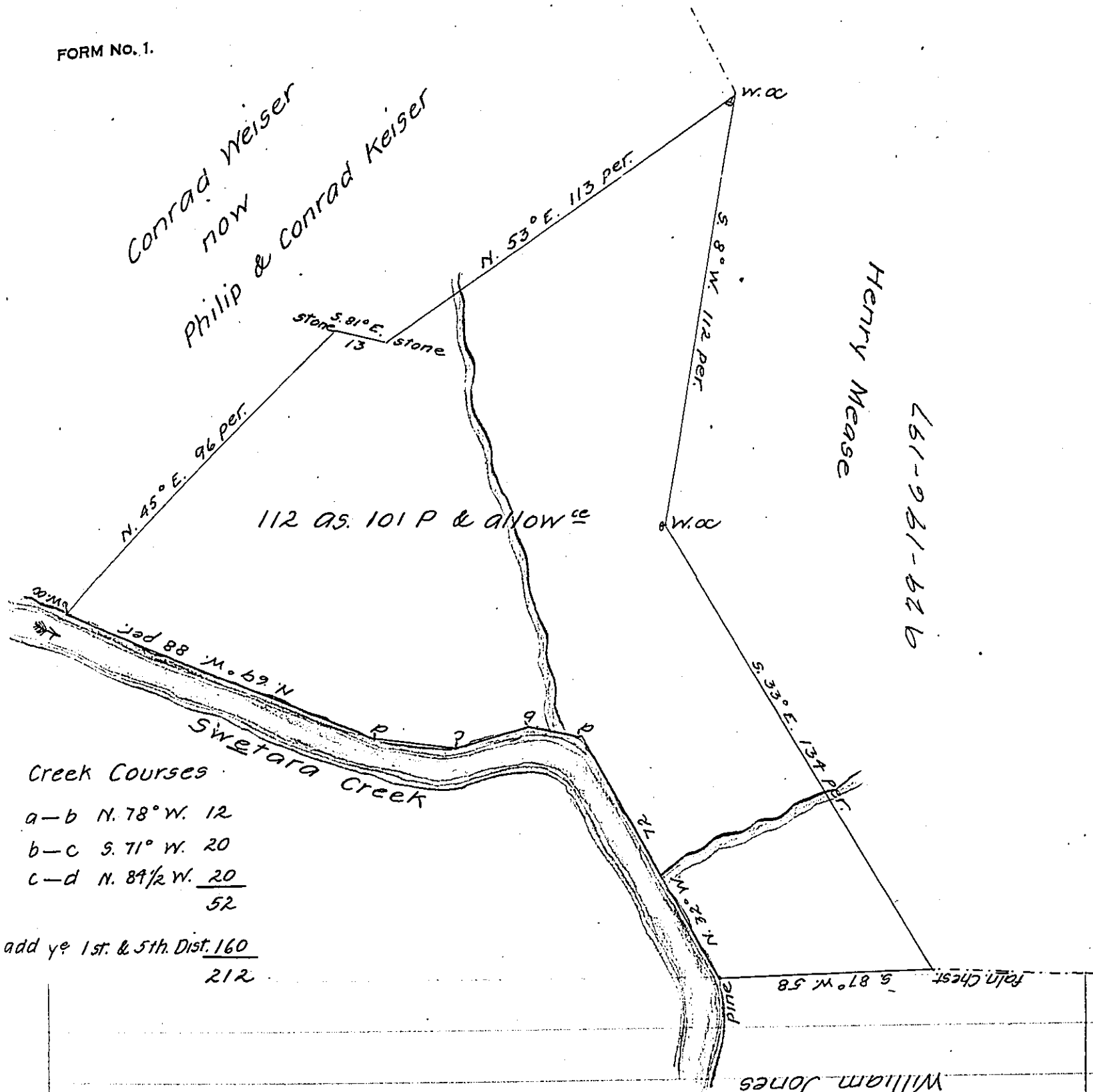


FORM NO. 1.



Creek Courses

- a-b N. 78° W. 12
- b-c S. 71° W. 20
- c-d N. 89 1/2° W. 20
- 52

add ye 1st. & 5th. Dist. 160
212

William Jones

Divided off on the 10th day of August 1805 the above described tract containing one hundred & twelve acres & one hundred and one Perches & allow^e of six Pct. (for Casper Mease) Situate in Bethel township Dauphin County Being Part of a larger tract granted to Conrad Weiser by Warrant of the 30th day of January 1749

Levi G. Hollingsworth D.S.

To Samuel Cochran Esqr. }
Surveyor Genl. of Penna. }

IN TESTIMONY that the above is a copy of the original remaining on file in the Department of Internal Affairs of Pennsylvania, made conformably to an Act of Assembly approved the 16th day of February 1833, I have hereunto set my hand and caused the Seal of said Department to be affixed at Harrisburg, this twenty-first day of May 1907

Henry Howell
Secretary of Internal Affairs.